

800 Series TEA

Application Note

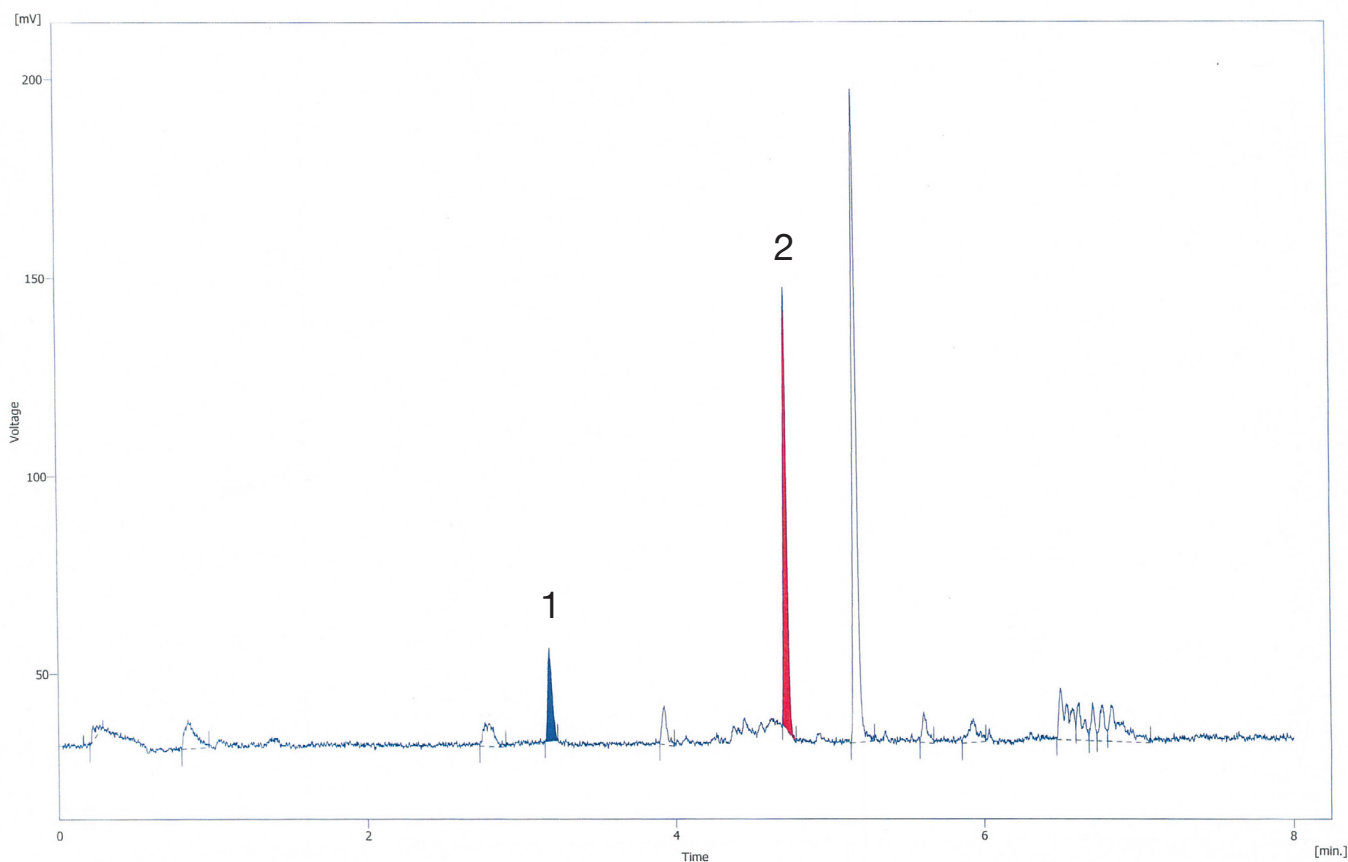
NDMA in Malt

Application Number: 011



- 1 NDMA (2.75 µg/Kg in Malt)
- 2 NDPA (Internal Standard)

GC: Ellutia 200 Series GC
Column: 30m WAXetr 0.25 x 0.25
Injector: Split/splitless @ 200°C
Sample: 2.75µg/Kg NDMA in malt in DCM with NDPA Internal Standard
Temperature Programme: 90°C for 0 minutes
25°C/min to 210°C
hold 3 min
Detector: Ellutia TEA 810



UK Tel: 01353 669916 Fax: 01353 669917
USA Tel: 843 614 3640 Fax: 843 614 3642
Germany Tel: 0561 400 0430 Fax: 0561 400 0429
Email: info@ellutia.com **Website:** <http://www.ellutia.com>